



## Mod. **SPP**

Rain/Snow Sensor (adjustable)

## Highlighted specs

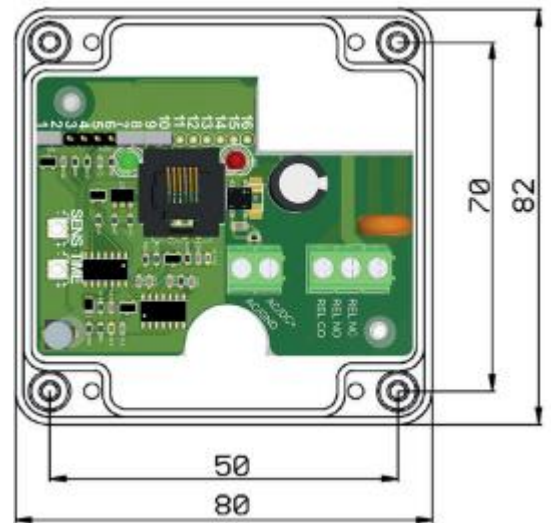
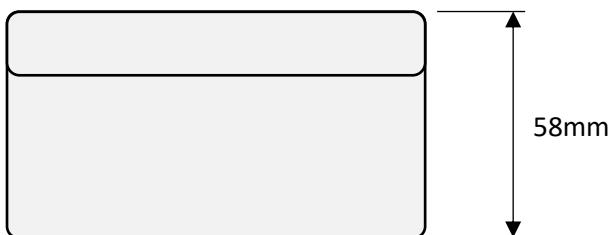
- Strong and reliable Rain Sensor
- Automatic heating in case of rain or snow
- Integrated relay with status led (2A@24Vdc max load)
- Adjustable sensibility
- Easy to clean and maintain
- According to **CE** norms

The rain sensor allows to **determine the exact time when there's a rainfall or snow**. Thanks to a **special heating system on its surface**, the water evaporates in a few moments, so it's also **possible to determine the duration of the event which featured the precipitation**. The sensor is equipped with a **gold-plated stainless-steel grid** which through a conductivity measurement detects the presence of water on its surface and **closes a contact** (relay), that can be recorded by a datalogger. Adjustable sensibility. Not suitable for distilled water.

<b>Detection Area</b>	~50cm <sup>2</sup>
<b>Operating range</b>	Dry / Wet – adjustable
<b>Time constant</b>	< 1 sec (average time)
<b>Working temperature</b>	-30 ÷ 60°C
<b>Standard signal output</b>	On/Off with dry contact (max 2A/24Vdc)
<b>Protections</b>	Polarity reverse and transient
<b>Made of</b>	Reinforced resin and gold foil grid
<b>Power Consumption</b>	11÷18 Vdc; 50÷300mA@12Vdc (with/without heating)
<b>Weight</b>	120g
<b>Dimensions</b>	85x85x60 mm (LxWxH)
<b>Protection class</b>	IP65 - ABS

## Size and connections

Pin	Cable CSxx	Pinout
1	White	Dry contact
2	Green	Dry contact
3	Grey/Orange	Gnd
4	Red	Vdc:10÷18V



## Order code

Sensor	Accessories	Order Code
Snow/Rain sensor		SPP
	CS05 – Cable 5m sensor-datalogger	05
	CS10 – Cable 10m sensor-datalogger	10
	CSxx – Cable xx* m length, sensor-datalogger – to be specified at order	xx

\*specify the length for no standard measures

example of order code

SPP 10